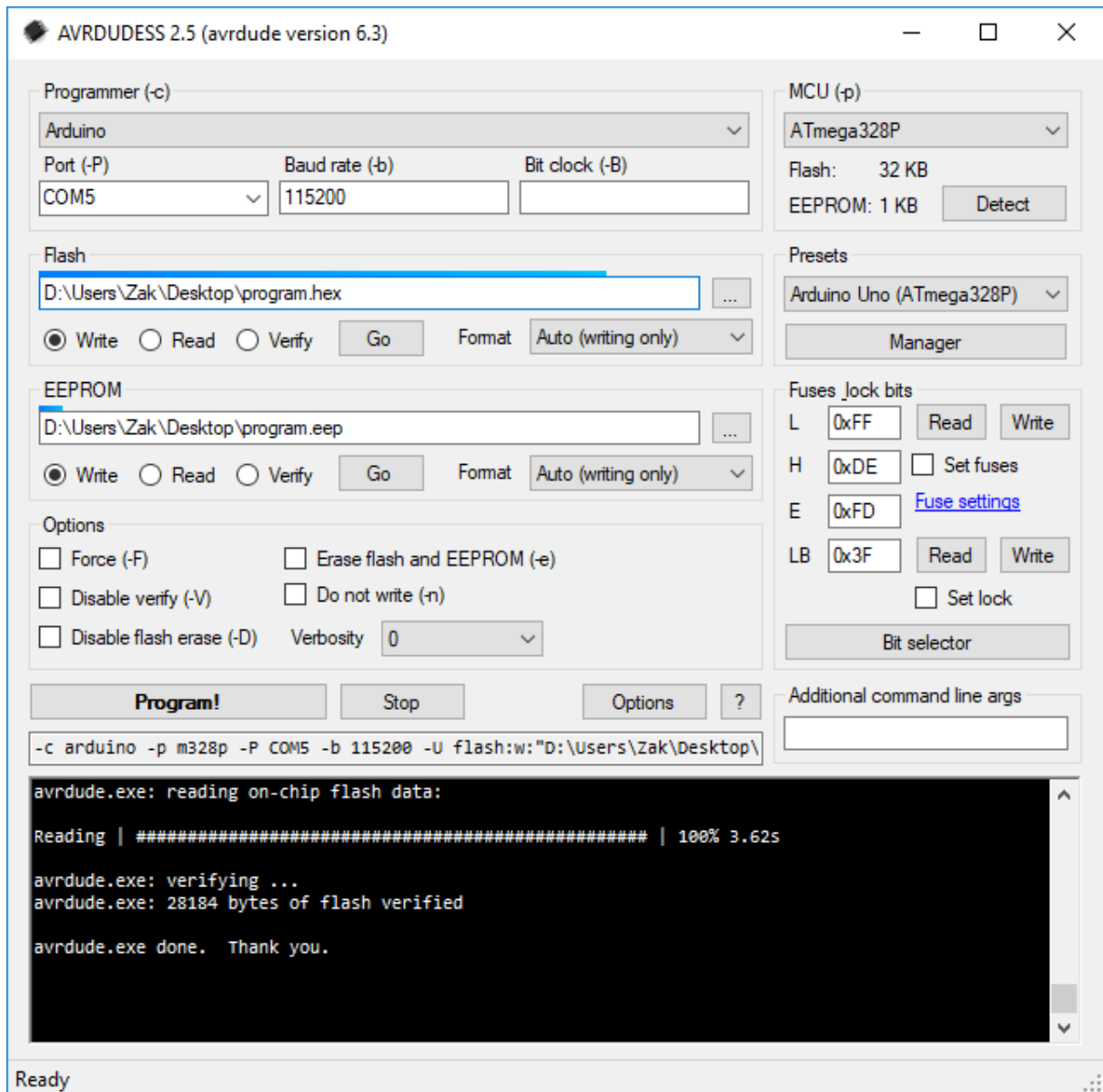

AVRDUDESS - A GUI for AVRDUDE

This is a GUI for AVRDUDE (<https://github.com/avrdudes/avrdude/>).

<https://blog.zakkemble.net/avrdude-ess-a-gui-for-avrdude/>



Windows:

Requires .NET Framework 2.0 SP1 or later. All systems since Windows Vista will have the required version already installed.

Linux & macOS:

Can be ran using Mono (<http://www.mono-project.com>).

Has not been tested on macOS, but should work. Might need the `--arch=32` argument.

```
1 mono --arch=32 avrdudess.exe
```

Installing on Ubuntu 18.04 and later:

Install Mono (this is the minimum required, you can use `mono-complete` for a full install):

```
1 sudo apt install libmono-system-windows-forms4.0-cil
```

On older versions of Ubuntu you might need to use `libmono-winforms2.0-cil` instead.

Install AVRDUDE and AVR Binutils (for avr-size):

```
1 sudo apt install avrdude binutils-avr
```

Run AVRDUDESS with Mono, you might have to run as root (sudo) so that AVRDUDE can access ports if you haven't changed any permissions or rules.d stuff:

```
1 mono avrdudess.exe
```

Building:

You will need Microsoft Visual Studio 2015 or later installed (older might work too). Open `./src/avrdudess.sln` and click the 'Start' button at the top and it will build and run AVRDUDESS.

You can find the output in `./src/avrdudess/bin/Debug/`, or `./src/avrdudess/bin/Release/` if you chose to build for Release (the drop down box second from the left of the Start button is where you can choose the configuration).

Making the Installer:

You will need Inno Setup installed. Once you've used Visual Studio to build the Release version of AVRDUDESS, run `./installer/installer.bat` and the installer exe will appear in the same directory.