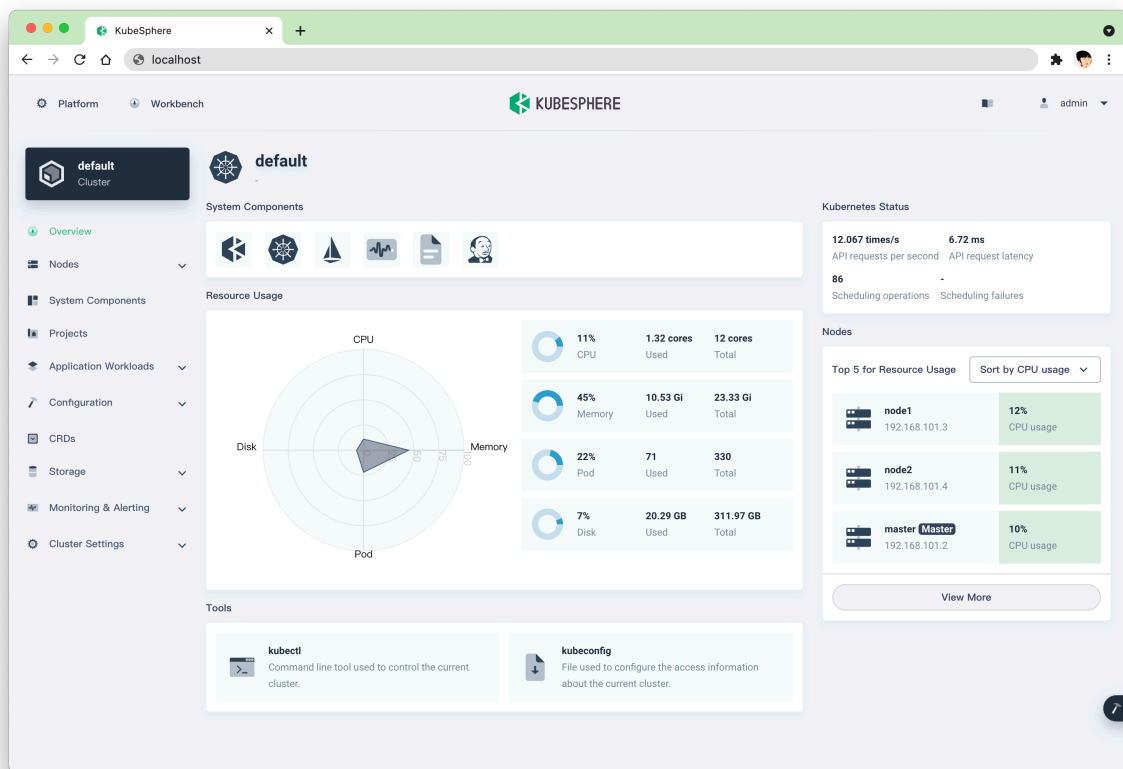

KubeSphere Console



KubeSphere console is the web interface for KubeSphere.



Getting Started

Console should be always used with KubeSphere, you can either use Kubekey or ks-installer to create a KubeSphere cluster.

The following will show you how to build console from source code.

Prerequisite

Node.js Console is written using Javascript. If you don't have a Node.js development environment, please set it up. The minimum version required is 12.18.

Yarn We use Yarn to do package management. If you don't have yarn, use the following to install:

```
1 npm install -g yarn@1.22.4
```

The minimum version required is 1.22.4, but you can use a newer version.

[Optional]Docker This is optional. If you just want to test and build on your local environment, there is no need to install docker. Otherwise, you need to install it. Install on Mac Install on Windows Install on Ubuntu

[Optional]Make This is optional too, we use `make` to reduce hand work, but it's totally ok without it.

How to build

Clone the repository, and run `yarn` && `yarn build`

```
1 git clone https://github.com/kubesphere/console.git
2 cd console/
3 yarn && yarn build
4 npm run serve
```

If you have trouble downloading the dependencies, try the following

```
yarn config set registry https://registry.npmmirror.com
```

After `npm run serve`, you should see the output like the following

```
1 > kubesphere-console@master serve
2 > NODE_ENV=production node server/server.js
3
4 Dashboard app running at port 8000
```

Now, console is up and running. But since there is no backed KubeSphere cluster, you shouldn't be able to login.

How to debug

A KubeSphere cluster is required to start debugging. You can refer to Installation to create a KubeSphere cluster.

Once the cluster is up, you replace the address of `ks-apiserver` in `server/config.yaml` with your real address. You can refer to access KubeSphere apiserver to expose your cluster `ks-apiserver`.

```
1 # backend service gateway server
2 apiServer:
3   clientID: kubescape
4   clientSecret: kubescape
5   url: http://ks-apiserver
6   wsUrl: ws://ks-apiserver
```

How to build container image

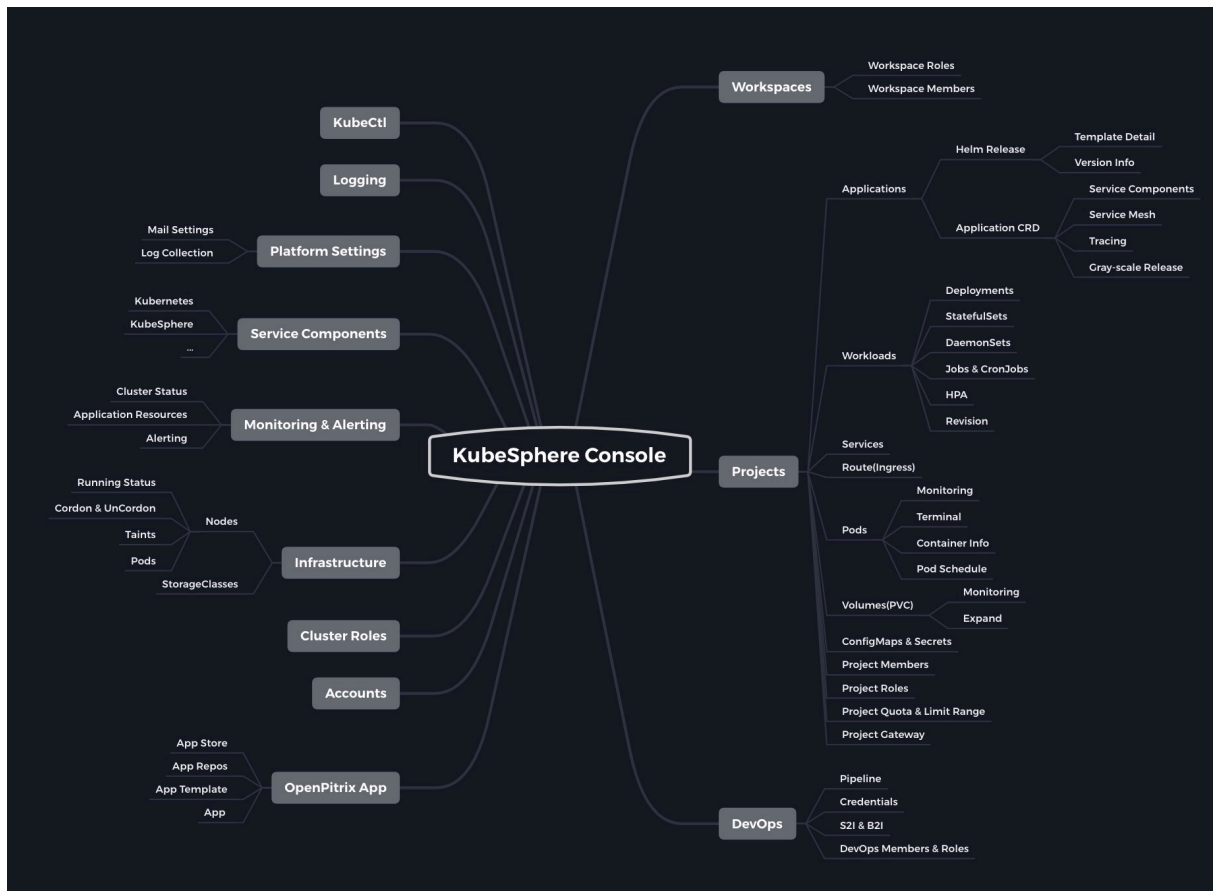
Just run the following command with your real `REPO` address.

```
1 REPO=yourawesomerepo make container
```

How to submit a PR

Follow Development Workflow to commit your codes.

Features Map:



Support, Discussion, and Community

If you need any help with KubeSphere, please join us at Slack Channel.

Please submit any KubeSphere Console bugs, issues, and feature requests to KubeSphere Console GitHub Issue.

Contributing to the project

Welcome to contribute to KubeSphere Console, see Contributing Guide.

The KubeSphere localization project has been launched on Crowdin. You can help localize the KubeSphere web console by referring to the localization guide.