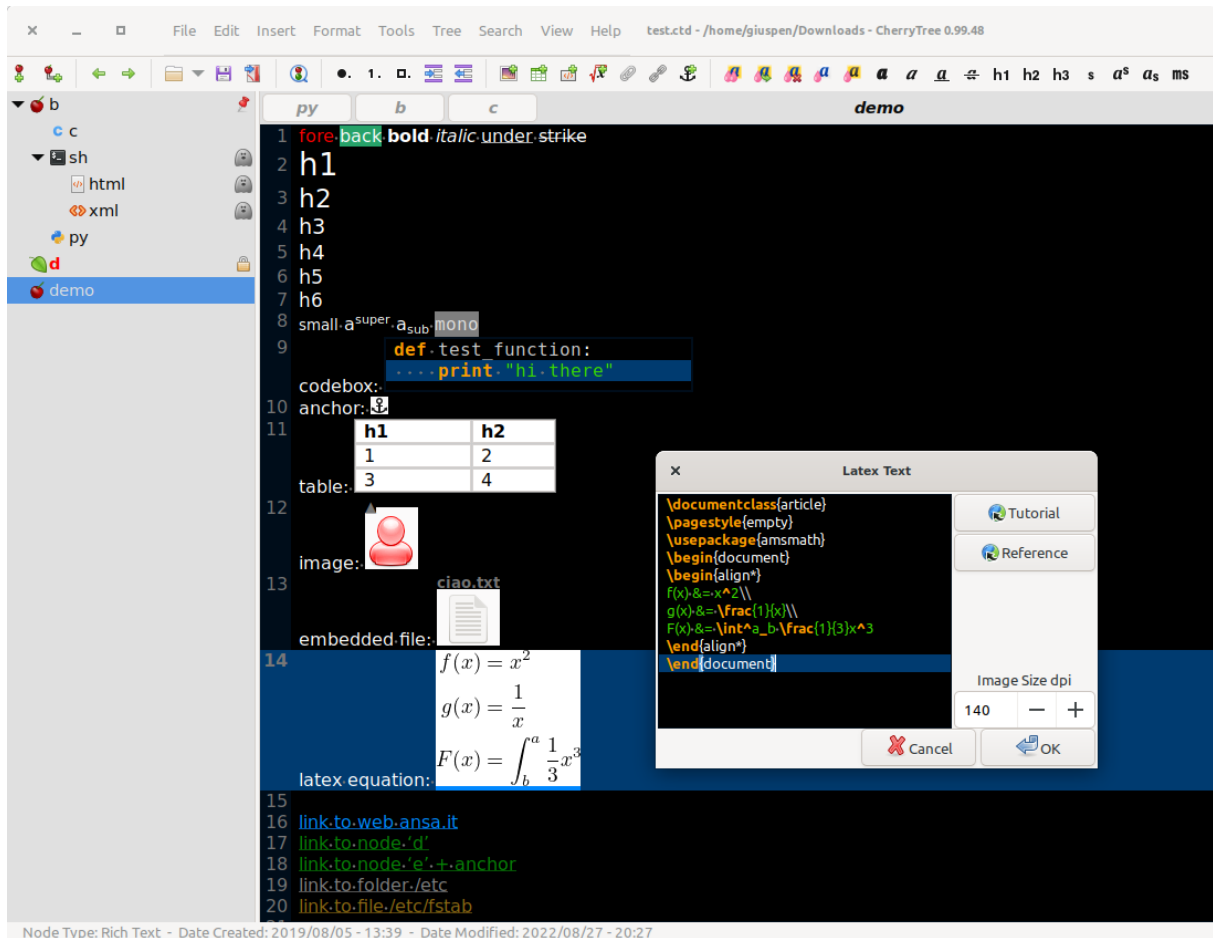


---

## CherryTree

A hierarchical note taking application, featuring rich text and syntax highlighting, storing data in either a single file (xml or sqlite) or multiple files and directories. The project home page is [giuspen.net/cherrytree](https://giuspen.net/cherrytree).

Written by Giuseppe Penone (aka giuspen) and Evgenii Gurianov (aka txe).



## Features

- Rich text (foreground color, background color, bold, italic, underline, strikethrough, small, h1, h2, h3, h4, h5, h6, subscript, superscript, monospace)
- Syntax highlighting supporting several programming languages
- Images handling: insertion in the text, edit (resize/rotate), save as png file
- Latex math equations rendering
- Embedded files handling: insertion in the text, save to disk

- 
- Multi-level lists handling (bulleted, numbered, to-do and switch between them, multiline with shift+enter)
  - Simple tables handling (cells with plain text), cut/copy/paste row, import/export as csv file
  - Codeboxes handling: boxes of plain text (optionally with syntax highlighting) into rich text, import/export as text file
  - Execution of the code for code nodes and codeboxes; the terminal and the command per syntax highlighting is configurable in the preferences dialog; an embedded terminal is available on linux and mac os
  - Alignment of text, images, tables and codeboxes (left/center/right/fill)
  - Hyperlinks associated to text and images (links to webpages, links to nodes/nodes + anchors, links to files, links to folders)
  - Spell check (using gspell)
  - Intra application copy/paste: supported single images, single codeboxes, single tables and a compound selection of rich text, images, codeboxes and tables
  - Cross application copy/paste (tested with libreoffice and gmail): supported single images, single codeboxes, single tables and a compound selection of rich text, images, codeboxes and tables
  - Copying a list of files from the file manager and pasting in cherrytree will create a list of links to files, images are recognized and inserted in the text
  - Print & save as pdf file of a selection / node / node and subnodes / the whole tree
  - Export to html of a selection / node / node and subnodes / the whole tree
  - Export to plain text of a selection / node / node and subnodes / the whole tree
  - Toc generation for a node / node and subnodes / the whole tree, based on headers h1, h2 and h3
  - Find a node, find in selected node, find in selected node and subnodes, find in all nodes
  - Replace in nodes names, replace in selected node, replace in selected node and subnodes, replace in all nodes
  - Iteration of the latest find, iteration of the latest replace, iteration of the latest applied text formatting
  - Import from html file, import from folder of html files
  - Import from plain text file, import from folder of plain text files
  - Import from basket, cherrytree, epim html, gnote, keepnote, keynote, knowit, mempad, notepad, notepad++, rednotebook, tomboy, treepad lite, tuxcards, zim
  - Export to cherrytree file of a selection / node / node and subnodes / the whole tree
  - Password protection (using <http://www.7-zip.org/>) available only for storage as single file
    - NOTE: while a cherrytree password protected document is opened, an unprotected copy is extracted to a temporary -folder of the filesystem; this copy is removed when you close cherrytree

- 
- Tree nodes drag and drop
  - Automatic link to web page if writing the URL
  - Automatic link to node if writing node name surrounded by [[node name]]

## **Prebuilt binaries**

Prebuilt binaries can be found on [github.com/giuspen/cherrytree/releases](https://github.com/giuspen/cherrytree/releases) and [giuspen.net/cherrytree/#downl](https://giuspen.net/cherrytree/#downl).

## **How to build from source code**

In order to build from the source code, please read BUILDING.md.

## **Localization**

The following languages are supported (If you want to help translating to your language write me):

- Arabic (Abdulrahman Karajeh, up to date)
- Armenian (Seda Stamboltsyan, up to date)
- Bulgarian (Iliya Nikolaev, up to date)
- Chinese Simplified (Wang Yu, up to date)
- Chinese Traditional (Emer Chen, up to date)
- Croatian (Filip Bakula, up to date)
- Czech (Pavel Fric, up to date)
- Dutch (up to date)
- English (default)
- French (Francis Gernet, up to date)
- Finnish (Henri Kaustinen, TO BE UPDATED)
- German (Matthias Hoffmann, up to date)
- Greek (TO BE UPDATED)
- Hindi India (TO BE UPDATED)
- Hungarian (Stiener Norbert, TO BE UPDATED)
- Italian (Vincenzo Reale, up to date)
- Japanese (Piyo, up to date)
- Kazakh (Viktor Polyanskiy, up to date)
- Kazakh (Latin) (Viktor Polyanskiy, up to date)
- Korean (Sean Lee, up to date)
- Lithuanian (up to date)

- 
- Persian (Majid Abri, up to date)
  - Polish (Mariusz Gasperaniec, up to date)
  - Portuguese (Rui Santos, up to date)
  - Portuguese Brazil (Raysa Dutra, up to date)
  - Romanian (Tudor Sprinceana, up to date)
  - Russian (Viktor Polyanskiy, up to date)
  - Slovenian (Erik Lovrič, up to date)
  - Spanish (up to date)
  - Swedish (Åke Engelbrektson, up to date)
  - Turkish (Ferhat Aydin, up to date)
  - Ukrainian (Giuseppe Penone, up to date)

## Used libraries

<https://www.gtkmm.org/en/documentation.shtml>      <https://developer-old.gnome.org/gtkmm-tutorial/3.24/> <https://developer-old.gnome.org/gtkmm/3.24/> <https://developer-old.gnome.org/gtkmm/3.24/hierarchy.html>  
<https://developer-old.gnome.org/gtksourceviewmm/stable/>  
<https://developer-old.gnome.org/libxml++-tutorial/stable/> <https://developer-old.gnome.org/libxml++/stable/>  
<https://wiki.gnome.org/Projects/gspell> <https://developer-old.gnome.org/gspell/stable/>